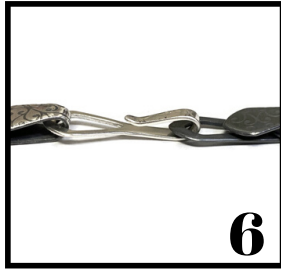
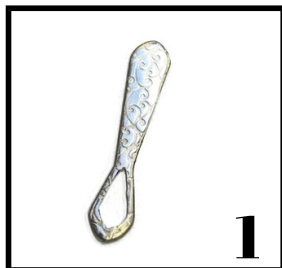




# Long Drop Link Clasp Instructions

by Lynette Andreasen

Create a unique, handmade clasp for your long drop link chain made entirely of sheet metal, with no soldering!



Follow steps 1-6 on the instructions included in the December 2021 Potter Box for making the "Long Drop Link" chain - however, make sure that you scribe and make the interior cut on the short end of the shape (1).

Use a ruler and scribe to draw lines on the longer end of the link, bringing the entire shape to a long taper (2).

Saw along the lines and refine with file and sandpaper (3).

Bend the tapered end around a mandrel or round-nosed plier to create a hook for the clasp (4).

You can also use the pliers to slightly curve the very end of the taper to give it a more elegant shape (5).

Connect the clasp to the chain using the same method used to connect the chain links. (6).

